

Massey Ferguson 3635

Tractor Test No. 1976/12

APPLICANT

GVS-Agrar AG
Im Majorenacker 11
8207 Schaffhausen

TRACTOR

Manufacturer: AGCO SA.
Model: Massey Ferguson 3635T3
Approval certificate no.: 4MA2 54

SUSPENSION AND BRAKES

Central four-wheel drive with powershift transmission
Wet disc brake on rear axle
Automatic all-wheel activation
Mechanical parking brake

DRIVER PROTECTION

Integrated safety cab

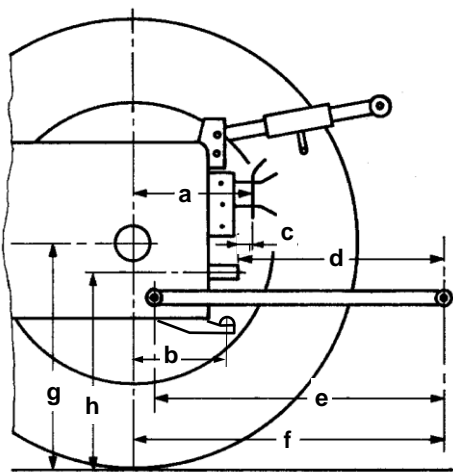


TYRES

	Track width:
front: 360/70 R20	1580 mm
rear: 480/70 R28	1520 mm

DIMENSIONS

Length:	3780 mm
With front mounting:	— mm
Front overhang from steering wheel:	— mm
Width:	2030 mm
Height:	2480 mm
Wheelbase:	2080 mm
Ground clearance:	360 mm
Turning diameter:	8,2 m (without four-wheel drive) 9,0 m (with four-wheel drive)



Rear

a:	650 mm
b:	— mm
c:	170 mm
d:	540 mm
e:	890 mm
f:	1020 mm
g:	650 mm
h:	680 mm

Front

d:	— mm
e:	— mm
f:	— mm
g:	— mm
h:	— mm

TEST EQUIPMENT

■ —

WEIGHT

in test equipment

Front:	1360 kg	42 %
Rear:	1910 kg	
Total:	3270 kg	

Permissible front axle load:	2500 kg
Permissible rear axle load:	3200 kg
Permissible total weight:	5100 kg

Payload:	1830 kg
----------	---------

Towed weight, braked:	22 000 kg
-----------------------	-----------

CAPACITIES

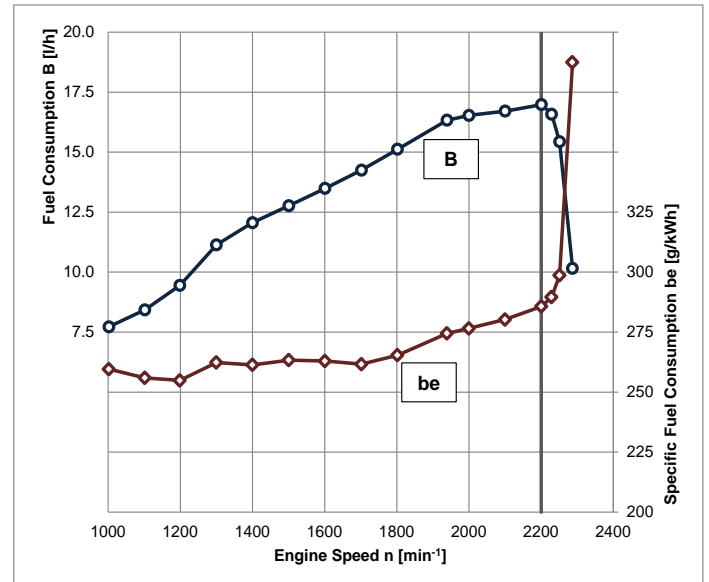
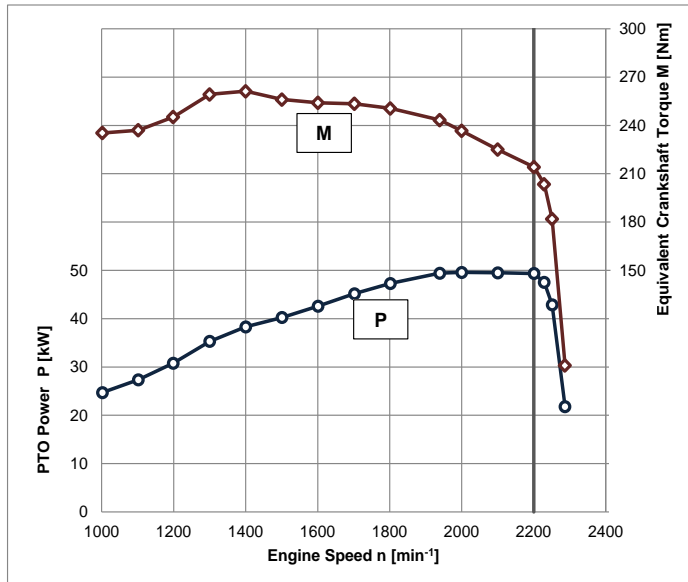
Fuel tank	110 l	
AdBlue tank	— l	
Engine oil	10,5 l	(change interval 400 h)
Gearbox and Hydraulic oil	38 l	(change interval 1200 h)

Massey Ferguson 3635

ENGINE (Manufacturer's data)

Manufacturer:	Sisu
Model:	33.484DTA
Injection:	Diesel direct injection
Supercharging:	Exhaust gas turbocharger and air-to-air intercooling
Exhaust emission treatment:	—
Bore/stroke:	108 / 120 mm
Cylinders / capacity:	3 / 3298 cm ³
Cooling:	Water, viscous fan
Rated power:	59 kW (80 PS) ISO 14396
Rated engine speed:	2200 min ⁻¹
Exhaust stage:	IIIA

POWER TAKE-OFF MEASUREMENT



Measurement conditions:

- air temperature 20 °C
- relative atmospheric humidity 29 %
- atmospheric pressure 970 mbar



Massey Ferguson 3635

Full load test values

	Speed [min ⁻¹]		Power		Fuel consumption		AdBlue consumption	
	Engine	PTO	kW	HP	Specific [g/kWh]	Absolute [l/h]	Specific [g/kWh]	Absolute [l/h]
Rated power	2200	613	49,4	67,1	286	17,0		
Maximum power	2000	557	49,5	67,3	277	16,5		
Normal speed PTO	1938	540	49,4	67,2	274	16,3		

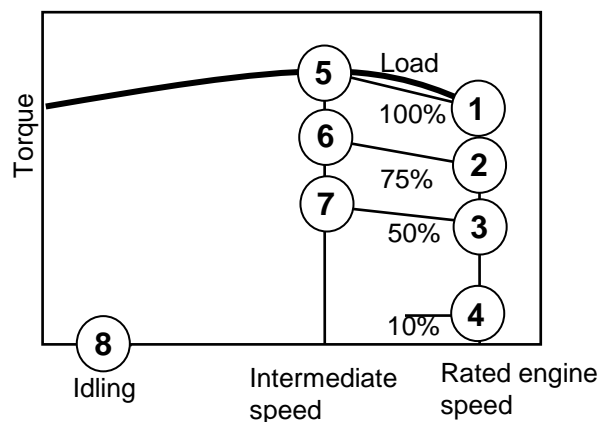
Max. torque: 261 Nm at 1400 min⁻¹
 Torque increase: 22 % at 36 % speed drop
 Starting torque: 110 %
 Idling speed: 870 min⁻¹
 Cutoff speed: 2350 min⁻¹

Partial load values

Fuel consumption with 42,5 % partial load at normal PTO speed

PTO shaft Fuel AdBlue
 1000 min⁻¹: 332 g/kWh, 8,4 l/h — g/kWh, — l/h
 1000E min⁻¹: 289 g/kWh, 7,3 l/h — g/kWh, — l/h

In characteristic diagram (with boost)



Measuring point	Fuel consumption		AdBlue consumption	
	Specific [g/kWh]	Absolute [l/h]	Specific [g/kWh]	Absolute [l/h]
1	286	17,0		
2	311	14,2		
3	345	10,6		
4	793	4,8		
5	258	11,5		
6	261	8,7		
7	269	5,9		
8	-	1,0		

EMISSIONS

Exhaust gas emissions

▪ Black smoke 3,60 SZ (BOSCH)

Emissions according to ISO 8178-4, C1

(with boost)

▪ Hydrocarbons HC 0,63 g/kWh*
 ▪ Nitrogen oxides NOx 4,70 g/kWh*
 ▪ Carbon monoxide CO 2,42 g/kWh*
 ▪ Particulate number Pn 3,5E14 #/kWh*
 ▪ Cycle consumption
 Fuel 306 g/kWh* (9,6 l/h)
 AdBlue — g/kWh* (— l/h)

Noise level

▪ Noise level at driver's ear: 87,0 dB(A)
 ▪ Passing noise: 82,5 dB(A)

* With reference to PTO power



Schweizerische Eidgenossenschaft
Confédération suisse
Confederazione Svizzera
Confederaziun svizra

Federal Department
of Economic Affairs DEA
Agroscope Reckenholz-Tänikon
Research Station ART

Swiss Confederation

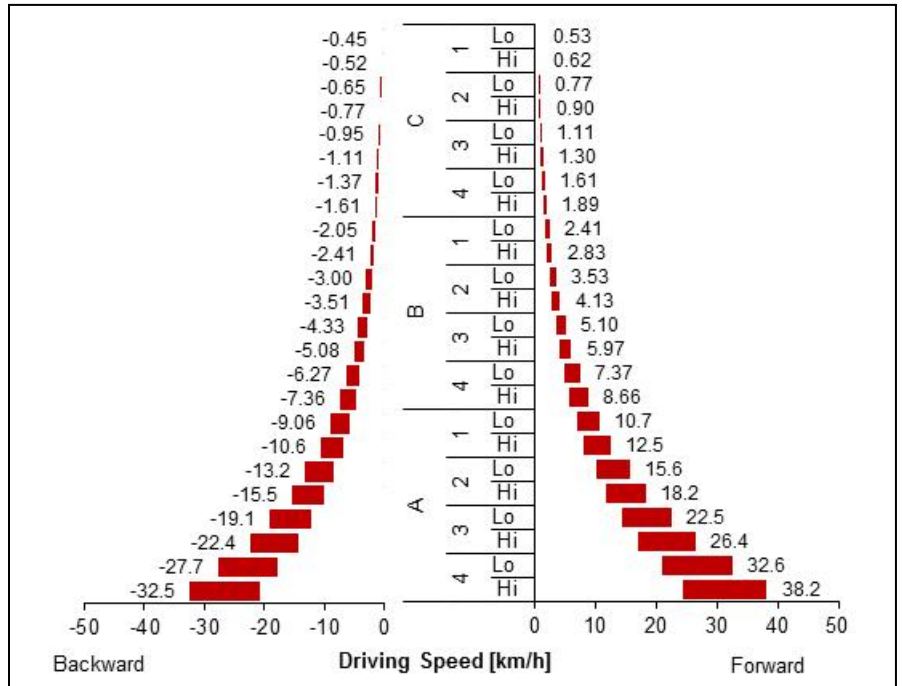
Massey Ferguson 3635

TRANSMISSION

Travel gear

- Dry clutch
- 3 groups
- 4 gears
- 2 half gears mechanical
- Synchromesh reverse gearbox

Driving speed at rated engine speed
(tyre radius $r = 675 \text{ mm}$)



PTO transmission

Rear

- Wet multi-plate clutch, electro-hydraulic engagement

Front

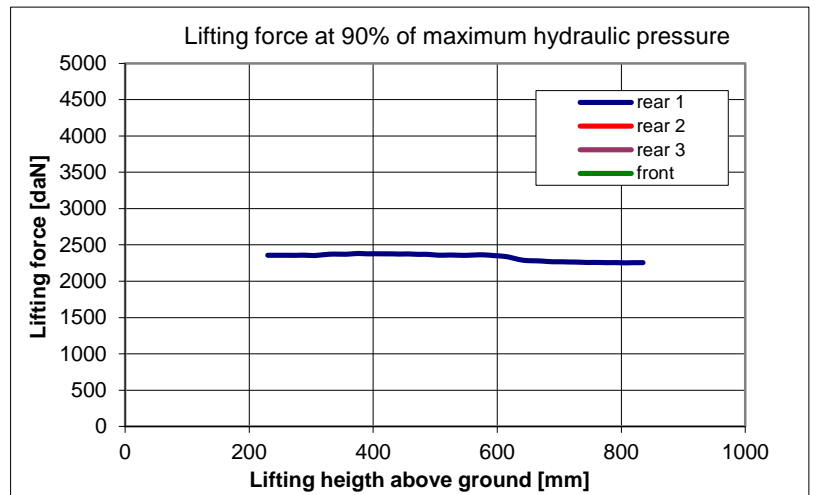
- —

PTO shaft	Rear						Front
	430	540	540E	1000	1000 E	Ground speed	1000
Engine speed	-	1938	1648	-	-	-	-

HYDRAULICS

Remote hydraulics

- max. oil pressure: 194,8 bar
- max. flow rate : 61,4 l/min
- flow rate: 43,8 l/min at 165,6 bar
- max. hydraulic power: 12,8 kW (48,3 l/min and 159,2 bar)
- max. flow rate through a single coupler: 61,4 l/min
- max. quantity of oil taken: 20 l



3-Point Hitch

Rear

3-Point Hitch, category: II
Control hydraulics mechanical via lower link

Front

- —

Measurement	Lifting movement	Lifting force at 90 % pressure	
		Continuous	Maximum
Rear	Lower link, short	605 mm	2250 daN / 2385 daN
	Lower link, medium		
	Lower link, long		
Front			

Explanatory notes on tractor test at:
www.traktorentest.ch



Schweizerische Eidgenossenschaft
Confédération suisse
Confederazione Svizzera
Confederaziun svizra

Federal Department
of Economic Affairs DEA
Agroscope Reckenholz-Tänikon
Research Station ART

Swiss Confederation